

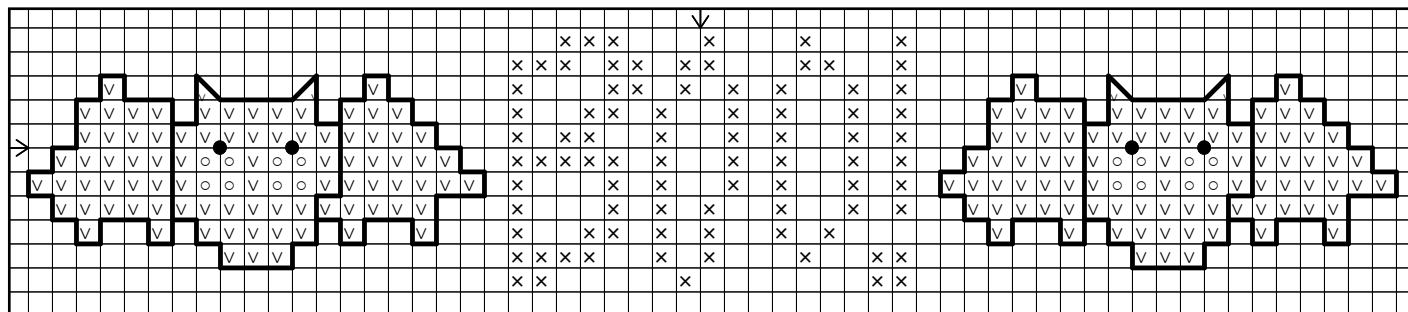


# Boo & Bats

from *L33 Halloween/Harvest Folk Art Samplers*

Leaflet contains 2 large samplers  
with over 25 motifs in each sampler

**\*\*NOT TO BE SOLD OR KITTED\*\***



- DMC Color**
- o 3712 Salmon-Med.
  - x 208 Lavender-Vy. Dk.
  - v 317 Pewter Grey

- Backstitch**
- 310 Black

Eyes--make French knots in 310 (1 strand, wrap once).

**OPTION:**

\*\*Use small black beads for eyes. We suggest Mill Hill Glass Seed Beads #02014 when stitching this design on 14ct.-18ct. Aida (28ct.-36ct. Linen)

Backstitch bats in 310.

Design Area is 11 x 57.

Stitch on the fabric of your choice!

Suggestions for use:

- 1--Cross stitch on a shirt/sweatshirt using 20ct. linen basted on the shirt.  
Cross stitch--4 strands  
Backstitch--2 strands.
- 2--Bookmark using aida/linen band.
- 3--Chain stitch around the edges; repeat on another piece of fabric the same size; join together and stuff. Attach a ribbon and hang on door knob or use as a sign on a door.
- 4--Frame it for that hint of Halloween spirit.
- 5--Your own creative choice.

Let us know how you would use this design!

For more leaflets from **Dianna Marcum** and other books with small/quick designs, be sure to check out our **Catalog** page on our website.

For information on Chain Stitch Joining, look for **B54 Linen Stitches**, the **BEST** basic linen technique book available.  
It makes learning finishing and decorative techniques simple and easy.

©1997 Dianna Marcum Designs  
©1997 Designs by Gloria & Pat, Inc.  
All Rights Reserved Worldwide  
**NOT TO BE SOLD OR KITTED**

Any questions and or comments about this chart, please contact us at  
**dsgnbygp@sumter.net**