

Beginner's Owl Cross Stitch Instructions



DMC Color

- 434 Brown-Lt.
- × 801 Coffee Brown-Dk.
- ▲ 898 Coffee Brown-Vy. Dk.
- Ecu Ecu

Backstitch

- 898 Coffee Brown-Vy. Dk.
- 987 Forest Green-Dk.

Backstitch in order given:

Backstitch pine needles in 987
All other backstitch in 898.

Design Area:

1¼" x 1½"

Fabric: 14 ct. Aida - 6" x 6"

Floss: Cross Stitch - 2 strands
Backstitch - 1 strand

Only Full Stitches and Backstitch are used in this chart. We have included instructions for all stitches used in Cross Stitch.

Gross Stitch - Step By Step

This design is worked on 14 Ct. Aida using a #24 tapestry needle. This is a color-coded graph - each symbol represents a color. (See Color Key beside chart.)

The center of this design is pointed out by small arrows. On this lesson sheet, it is also marked by a heavy dot. Find the center of your fabric - count up 10 squares. To begin at the bottom of the first stitch. Begin here. (See arrow.)

Gross Stitch Instructions

1st Row - Make 5 half crosses to the right, from bottom left to top right of each square. Cross the stitches by returning to the left from bottom to top. Crossing stitches in the same direction all the time gives your piece a smooth sheen.

2nd Row - Moving to the left one square, make 7 half crosses and return.

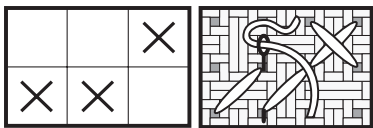
3rd Row - Move to the left one square, 1 half cross - skip 1 square, make 7 more half crosses and return.

4th Row - Make 1 half cross directly under the last row - skip 3 squares, make 3 half crosses and return. Continue down and - after finishing all the brown area, work the ecru; and then the dark brown.

Backstitch:

To finish this design, backstitch as instructed above.

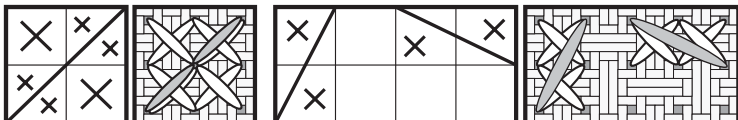
Full Cross Stitch



Be sure that all of your stitches lie in the same direction. Bottom stitches should lie from bottom left to upper right and top stitches from bottom right to upper left. Work the stitches from the bottom to the top

of the stitch, from left to right, then cross them as you work from right to left, still coming up at the bottom of each stitch and going down at the top.

Full Stitch with Backstitch

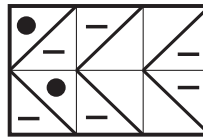


When there is a backstitch over one or two squares and the symbol is the **same** on either side of the backstitch, make a full cross stitch in that square. Add the backstitch last in the color indicated in the instructions.

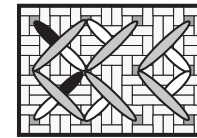
©2008 Designs by Gloria & Pat, Inc.

1/4 Stitch

1/4 stitches
on your chart:



1/4 stitches
on fabric:



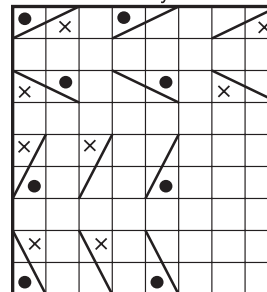
Helpful Hints:

1. Stitch from corner to center using the color indicated by the symbol.
2. Backstitch last in the color indicated in the instructions.

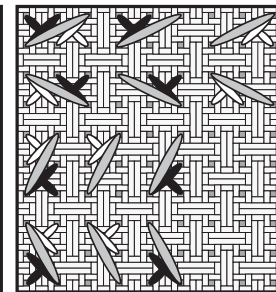
Special Note: If there are NO backstitch instructions given, stitch the backstitch line in the same or most predominant color in that area of the design.

3/4 Stitch

3/4 stitches on your chart:



3/4 stitches on the fabric:



Helpful Hints:

1. If the symbols are different on either side of the backstitch over 2 squares or there is a symbol on just one side of the backstitch, this will indicate that 3/4 stitches should be used in the color

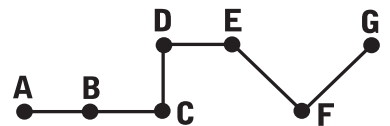
indicated by the symbol as shown on left.

2. Add the backstitch last in the color indicated in the instructions.

Backstitching Instructions

Backstitching (BS) is a part of some designs as outline or as lettering. The purpose of the backstitch is to form a continuous line with each stitch touching. It may travel in any direction. Backstitch is always last.

- | | | |
|---------|---|-----------|
| up at B | - | down at A |
| up at C | - | down at B |
| up at D | - | down at C |
| up at E | - | down at D |
| up at F | - | down at E |
| up at G | - | down at F |



Visit us at: www.gloria-pat.com