

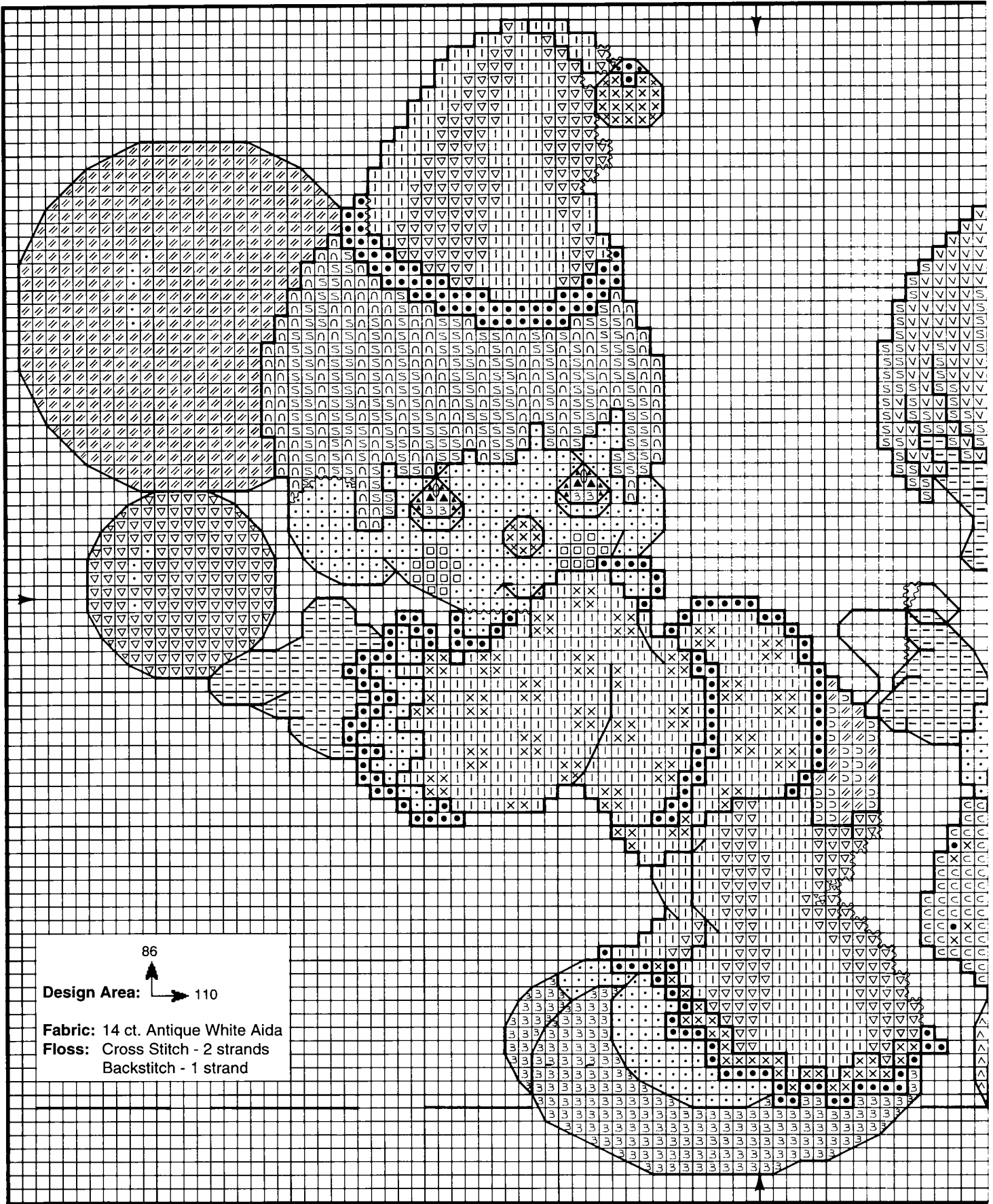


YOU ALWAYS
KEEP ME IN
STITCHES
PML-2

YOU ALWAYS KEEP ME IN STITCHES



PRECIOUS
MOMENTS™




YOU ALWAYS KEEP ME IN STITCHES


DMC	Color
•	White
◻	819 Baby Pink - Lt.
▽	745 Yellow - Lt. Pale
-	948 Peach Flesh - Vy. Lt.
◊	754 Peach Flesh - Lt.
c	3713 Salmon - Vy. Lt.
x	761 Salmon - Lt.
•	760 Salmon
v	712 Cream
s	739 Tan - Ultra Vy. Lt.
n	738 Tan - Vy. Lt.
^	3033 Mocha Brown - Vy. Lt.
∕	504* Blue Green - Lt.
∩	503 Blue Green - Med.
l	3752 Antique Blue - Vy. Lt.
3	932 Antique Blue - Lt.
▲	930 Antique Blue - Dk.
	3712 Salmon - Med.
	725 Topaz
	783 Topaz - Med.
	436 Tan
	3032 Mocha Brown - Med.
	420 Hazel Nut Brown - Dk.
	502 Blue Green
	931 Antique Blue - Med.
Metallic Thread	
	283Z* Silver


Add a little white stitch to eyes where marked ◊ ∩ .

Note: Wavy lines on chart indicate regular backstitch in a different color.

Backstitch in order given:


Backstitch pom-pom and band on hat (excluding ) in 3712.


Backstitch  at top right of hat in 783.

Backstitch remainder of hat (including  on band) in 931.

Backstitch clown's hair (excluding ) in 436.

Backstitch clown's nose in 760.


Backstitch clown's shirt (excluding ) in 3712.

Backstitch clown's hand and face (including ) in 420.

Backstitch yellow ball in 725.


Backstitch patch on clown's pants in 502.


Backstitch pink trim on clown's pants in 3712.

Backstitch  on clown's pants in 783.


Backstitch clown's pants, socks and shoes in 931.

Backstitch green ball in 503.

Backstitch bow in girl's hair (excluding ) in 760.

Backstitch girl's hair and ear (including  at bow) in 436.

Backstitch girl's dress in 760.

Backstitch  needle in silver metallic.

Backstitch thread to needle in 502.

Backstitch girl's hand and face in 420.

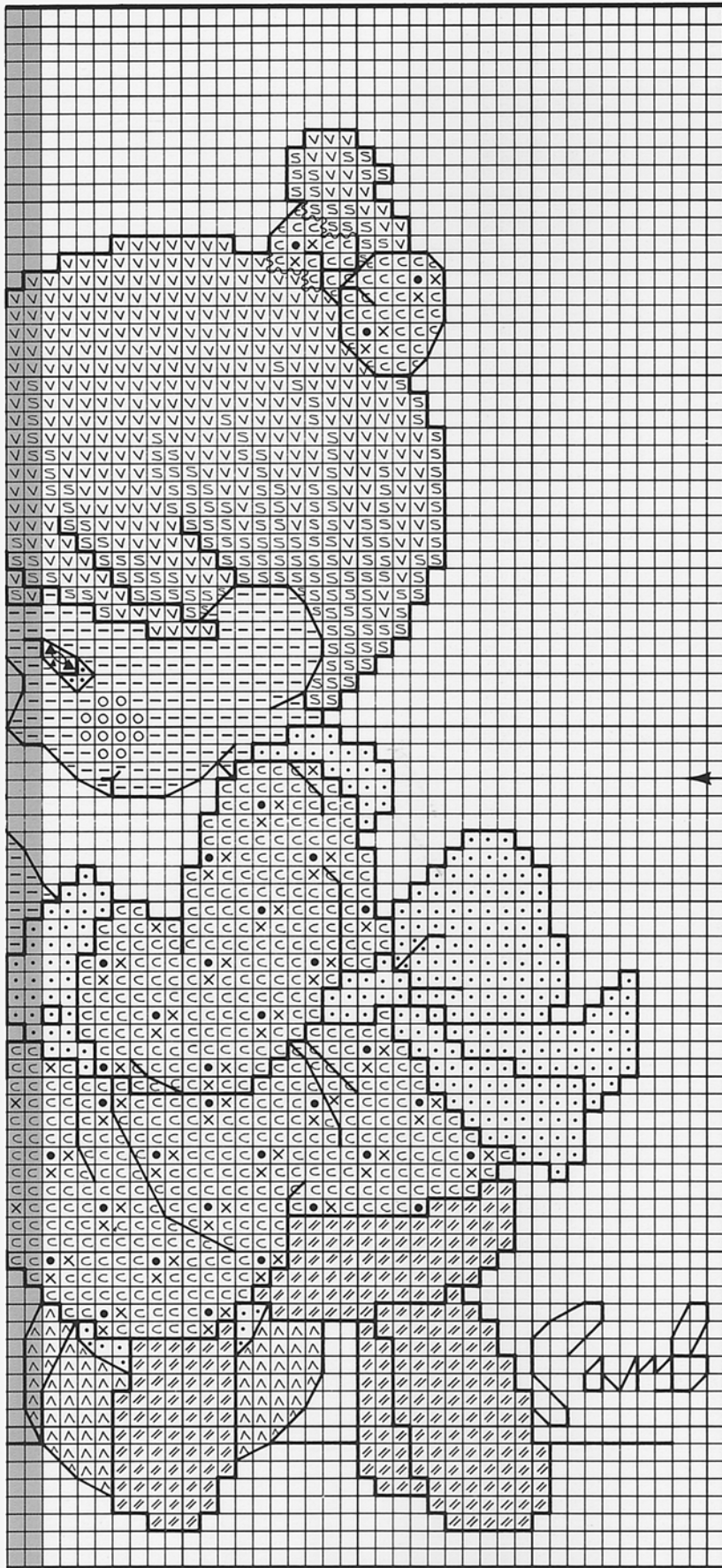
Backstitch stool in 502.

Backstitch girl's shoes in 3032.

Backstitch "Sam B" in 504.

Backstitch floor line in 420.

Shaded area indicates last two rows stitched on previous page.



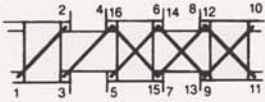
*Replace 504 with 3813.

Replace 283Z with Light Effects - E168

CROSS STITCH INSTRUCTIONS

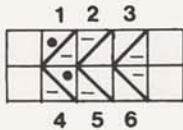
FULL CROSS STITCH

Be sure that all your stitches lay in the same direction. Bottom stitches in one direction and top stitches in the opposite direction. We work our stitches from the bottom left-hand corner to the top right-hand corner, then return in the opposite direction.



1/4 STITCH

How to recognize 1/4 stitches on your chart:



How 1/4 stitches look on fabric:



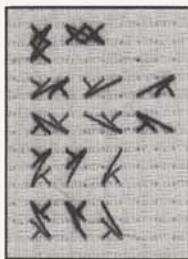
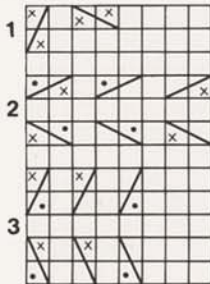
Helpful Hints

1. Stitch from corner to center using color indicated by symbol.
2. Backstitch last in color given in instructions.

Special Note: If there are *NO* backstitch instructions given, stitch the backstitch line in the color most predominant in that area of design.

3/4 STITCH

How to recognize 3/4 stitches on your chart: How 3/4 stitches look on fabric:



Helpful Hints

1. When a backstitch line crosses 2 squares vertically or horizontally and the symbols are the same on either side of the backstitch, this will indicate that these are full cross stitches (as shown in illustration #1). Backstitch last in color given in instructions.
2. If the symbols are different on either side of the backstitch, this will indicate that 3/4 stitches should be used in the color indicated by the symbol on either side of the backstitch (as shown in illustration #2 and #3). Backstitch last in color given in instructions.

SYMBOL WITH BACKSTITCH

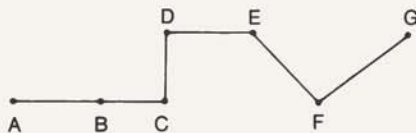
When there is backstitch over one square and the symbol is the same on either side of the backstitch, make a full cross stitch in that square. Backstitch last in color given in instructions.



BACKSTITCHING INSTRUCTIONS

Backstitching (BS) is a part of some designs—also used for lettering. The purpose of the backstitch is to form a continuous line with each stitch touching. It may travel in any direction.

- up at B--down at A
- up at C--down at B
- up at D--down at C
- up at E--down at D
- up at F--down at E
- up at G--down at F



Proudly
Presents



Dear Friends,

Pat Carson and I have been friends for many years, and through working with her, I've gotten to know her as one who loves and cares so much for children. One day, about a year ago, I told Pat about a project I have been working on in the Philippines. Burias is a remote Island off the shore of the Bicol region, where people live without electricity and most of the families are desperately poor. Several years ago, I sent a large container of rice to help them after a typhoon destroyed much of the Island. And about a year ago, I began building a park there with two specific things in mind. One was to keep the children off the streets by giving them a place to play, and the other was to build a park beautiful enough to capture the interest of people throughout the Bicol and Masbate regions. My hope is that as people come to visit the park, they will also need lodging, places to eat, and stores to buy from, which will bring a much needed revenue to the Island.

I shared my concerns with Pat and I was glad when she offered to be of help, as the Burias project is very costly. When I was there last January, I saw the children playing in the park, and I was deeply touched. Pat and I discussed the possibility of raising funds for supplying water for the park, a library, and a special Christmas party for the children.

I am truly grateful for Pat's help as I am to each of you for your donation.

Sam B

